



Written By: Austin Blakely



INTRODUCTION

This guide details the process of removing and replacing the keyboard in the One Education Infinity.

The keyboard is a major input device for the computer, responsible for tracking keystrokes while typing. A malfunctioning keyboard should be easy to diagnose, as the user should notice incorrect input during keystrokes, or the keystroke not being read as intended. If your keyboard is tracking your input erroneously, replacing it will likely fix the issue.



TOOLS:

- [Metal Spudger](#) (1)
 - [Phillips #00 Screwdriver](#) (1)
 - [iFixit Opening Tools](#) (1)
 - [Spudger](#) (1)
-

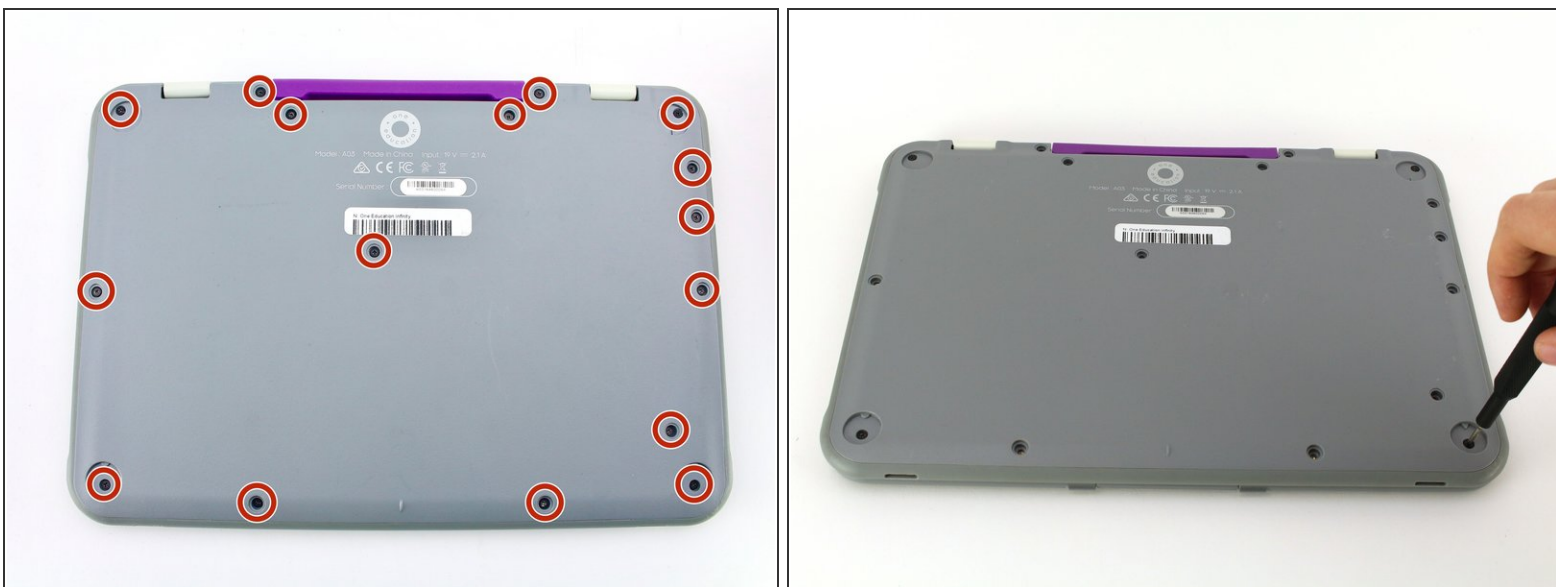
Step 1 — Back Case



 Always power off your device before beginning disassembly.

- Remove the screw covers and rubber feet from the bottom of the laptop with a metal spudger.

Step 2



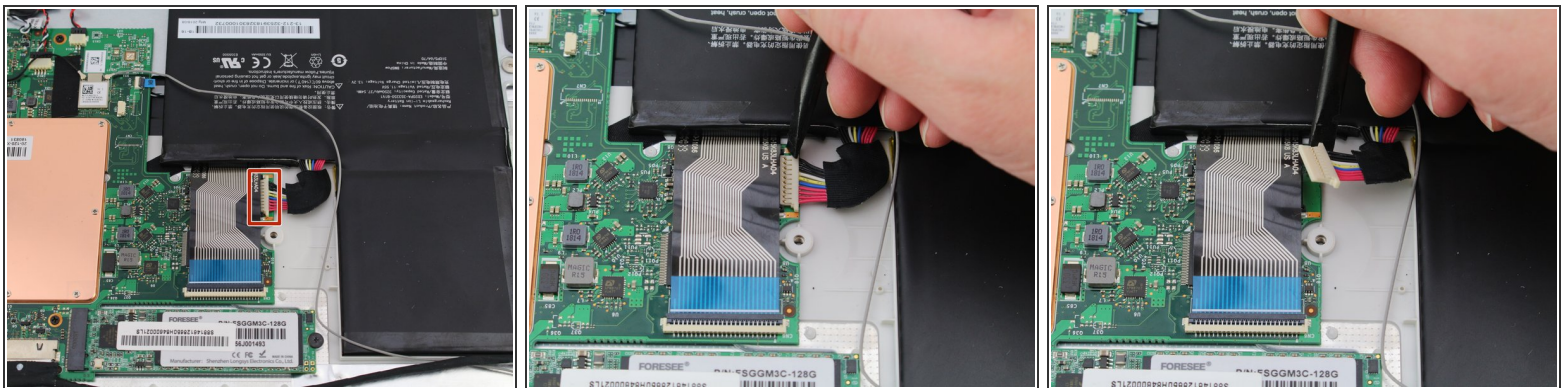
- Using a Phillips #00 screwdriver, remove the sixteen 5.0 mm black screws from the back panel.

Step 3



- Using the iFixit plastic opening tool or spudger, start near the white hinge of the device and lift along the outer edges of the device until all clips are released.
 - Lift the back case off of the device.
- i** Removing the back may create a loud snapping noise.

Step 4 — Battery



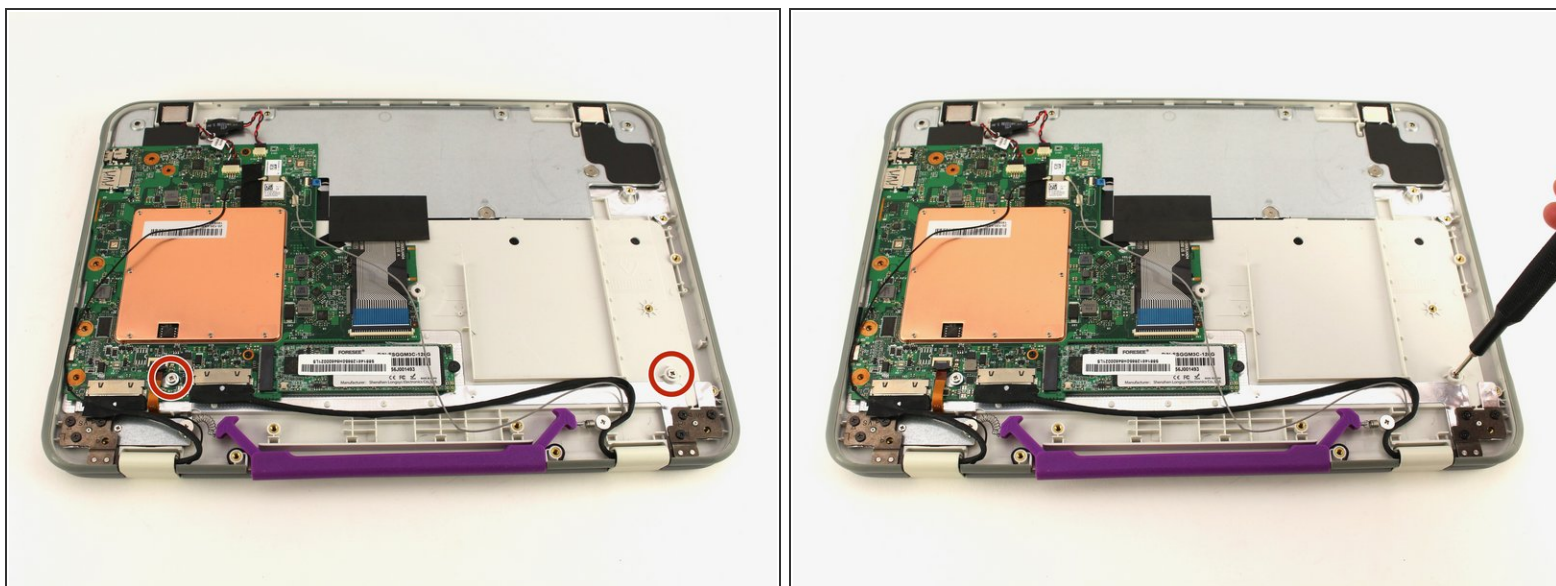
- i** There may be black tape inside your device covering components or holding down wires. This tape is unimportant for the function of the device, and can be removed.
- Carefully wiggle the battery cable to the right and out of the port with a plastic spudger.

Step 5



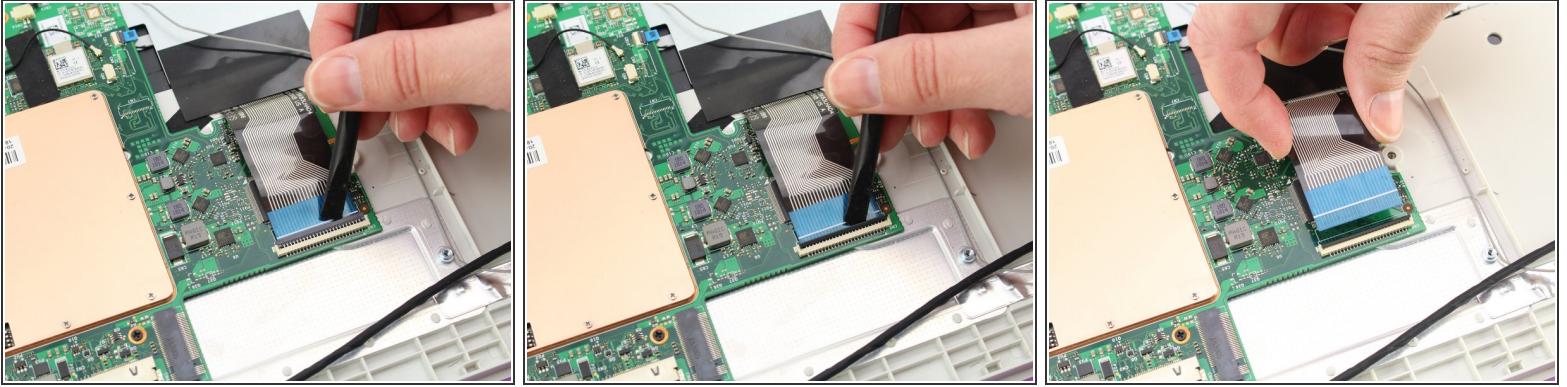
- Wedge a plastic spudger underneath the battery from the upper edge and slide it carefully along the length of the battery to separate it from the case.
- ⓘ There is a mild adhesive holding down the battery. Take care not to puncture or excessively bend the battery while freeing it from the adhesive.
- Lift the battery out from the internal case.

Step 6 — Keyboard



- Remove the two silver 3.5 mm screws from the two raised mounting points with a Phillips #00 screwdriver.

Step 7



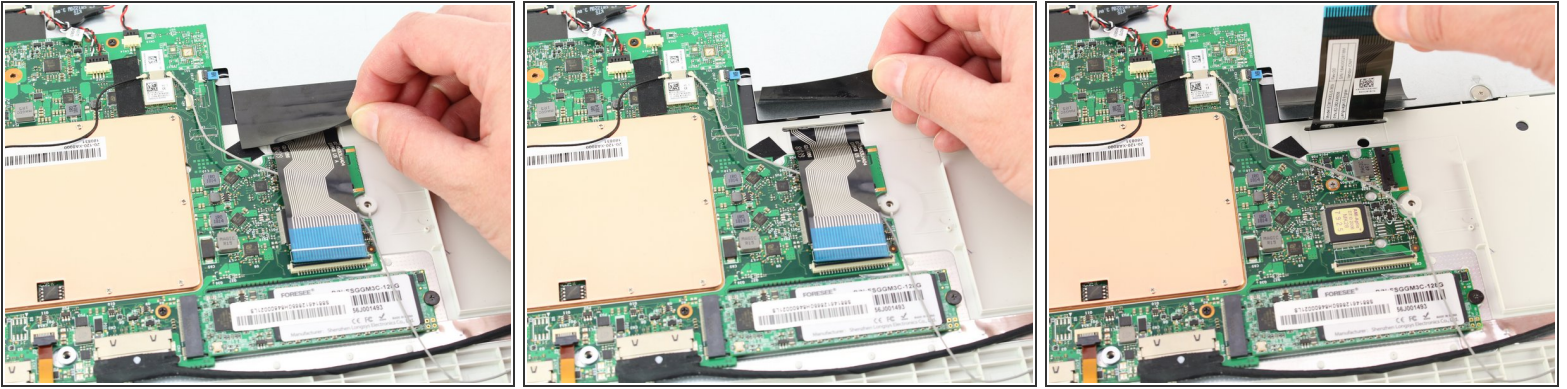
- Using a spudger, pop up the locking hinge on the wide ZIF connector in the middle of the back case on the right side of the motherboard.
- Pull the wide ribbon cable out from the ZIF connector with your fingers.

Step 8



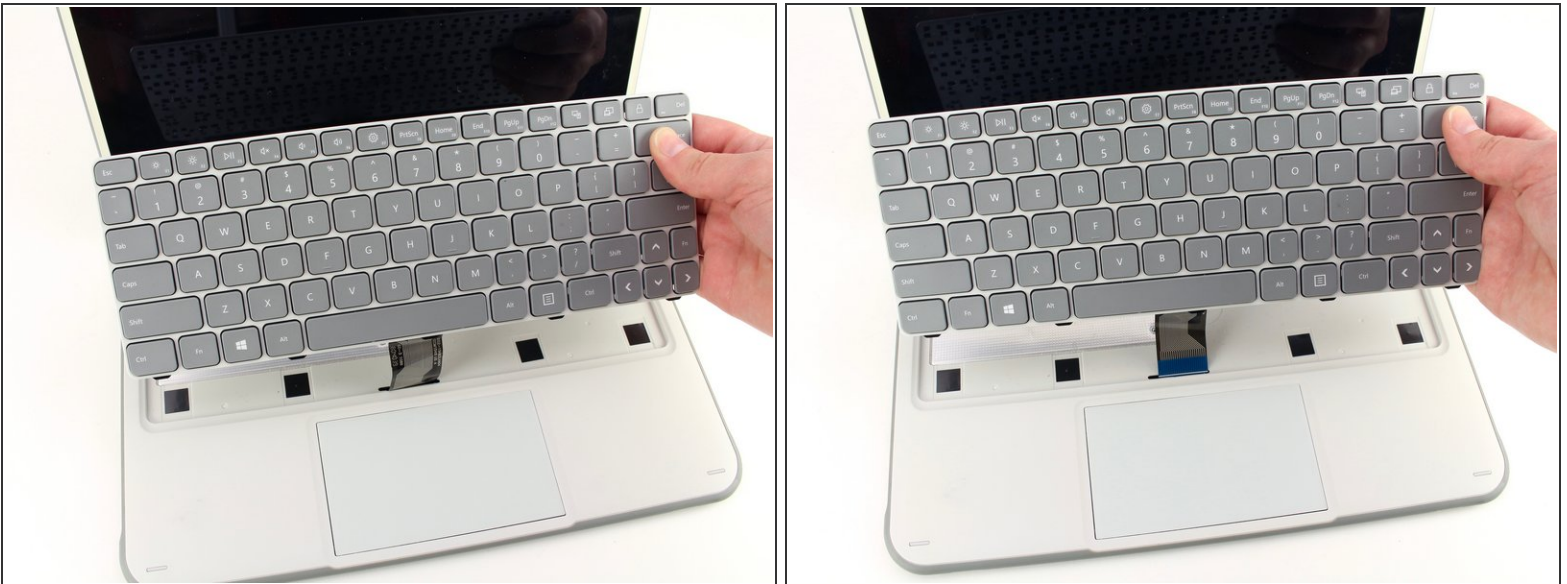
- Use a spudger to pry the keyboard up from one of the upper corners, then move the spudger along the upper edge to disconnect all of the clips on the upper side.
- ⚠ Do not remove the keyboard yet, as the ribbon cable on the backside is still held down with tape.
- Flip the device over without allowing the keyboard clips to reengage.

Step 9



- Peel back the thick black tape holding down the keyboard ribbon cable.
- Lift up the ribbon cable and feed it through the case as you pull the keyboard away.
- ☑ You may need to move the tape out of the way as you insert the new keyboard ribbon cable.

Step 10



- Taking care that the ribbon cable doesn't get caught on the tape on the other side, lift the keyboard out from the upper case.

To reassemble your device, follow these instructions in reverse order.